

Features & Benefits

- Easy to regulate
- Easy to assemble
- Large quantities of fresh air

Fresh 101

Window mounted vent adjusted for recessed mounting. The internal part is positioned in a milled slot in the window frame.

An external grille and a drip nozzle are mounted outside to prevent water penetration.

The external grille is available in two models, flatgrille (FG) or flatgrille/drip nozzle (HG).



Specification

Product	Description	Art no
Fresh 101 FG Bulk	Complete vent with internal part and external flatgrille	651111
Fresh 101 HG Bulk	Complete vent with internal part and external flatgrille + drip nozzle	651121
Fresh 101 Internal part	Internal part	651001

Technical data

Product	Fresh 101 FG	Fresh 101HG
Capacity at 10 Pa slot:	24 l/s	22 l/s
Wall opening slot:	655 x 24 mm	655 x 24 mm
Material:	ABS plastic (recyclable) and aluminium	ABS plastic (recyclable) and aluminium
Colour:	White, RAL 9010	White, RAL 9010

F101

Air supply vent

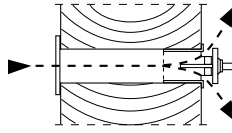
Description/function

Window mounted vent designed for recessed mounting. The internal part is positioned in a milled slot in the window frame. An external grille and a drip nozzle are mounted outside to prevent water penetration. The external grille is available in two models, FG or HG (see illustrations).

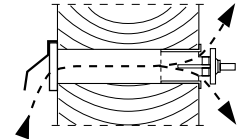
Internal part

The internal part contain a front part with a hinged cap which is equipped with a continuous control which opens/closes the vent. The position of the cap is adjusted by pulling the cap outwards and aside. The vent has a favourable distribution pattern as it distributes the air both upwards and downwards.

Fresh 101 FG



Fresh 101 HG



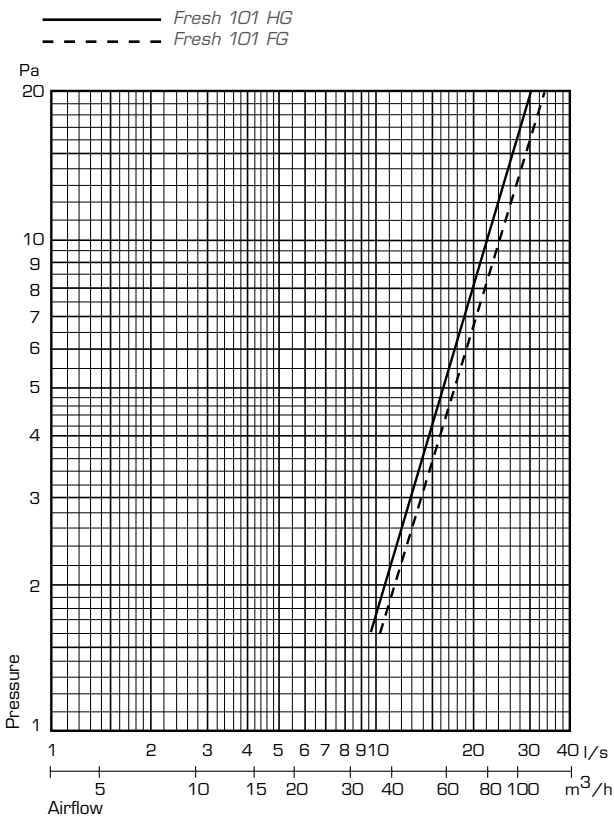
Technical data Fresh 101 FG

Capacity at 10 Pa:	24 l/s
Wall opening:	Slot 655 x 24 mm
Material:	ABS plastic (recyclable) & aluminium
Colour:	White, RAL 9010

Technical data Fresh 101 HG

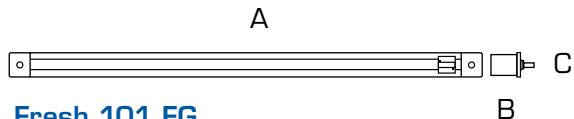
Capacity at 10 Pa:	22 l/s
Wall opening:	Slot 655 x 24 mm
Material:	ABS plastic (recyclable) & aluminium
Colour:	White, RAL 9010

Capacity

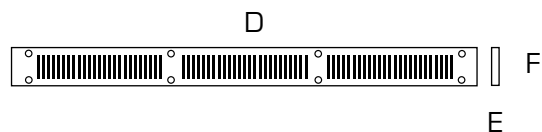


Dimensions 101 FG/HG

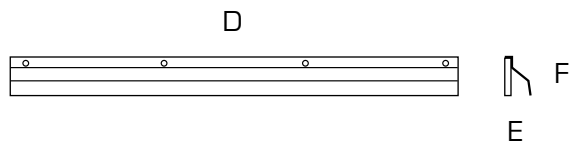
Fresh 101 internal part



Fresh 101 FG



Fresh 101 HG



Dimensions Fresh 101 FG/HG (mm)

Prod/dim	A	B	C	D	E	F
Fresh 101 FG	695	7	30	695	4	38
Fresh 101 HG	695	7	30	695	22	41

Maintenance

In order to ensure correct airflow we recommend to clean the vent and channel every 2-3 years.